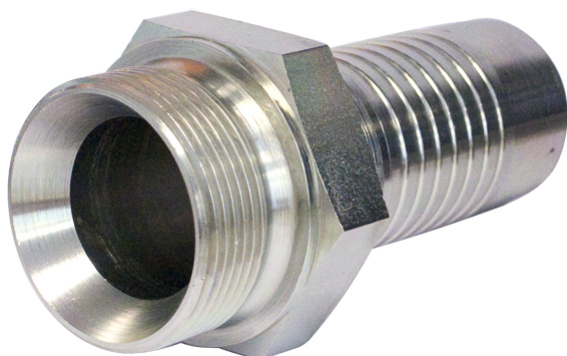


G-threaded straight



Product group	300
Material	Steel
Series	42-series
Fitting type	BSP
O-ring	No
Shape	Straight

Part no	Thread	Hex (mm)	Hose ID (inch)	Thread type	Weight (kg)
42020203	G 1/8" Male	14	3/16"	G	0.02
42020204	G 1/8" Male	14	1/4"	G	0.02
42020403	G 1/4" Male	19	3/16"	G	0.03
42020404	G 1/4" Male	19	1/4"	G	0.03
42020405	G 1/4" Male	19	5/16"	G	0.03
42020406	G 1/4" Male	19	3/8"	G	0.04
42020604	G 3/8" Male	22	1/4"	G	0.05
42020605	G 3/8" Male	22	5/16"	G	0.05
42020606	G 3/8" Male	22	3/8"	G	0.05
42020608	G 3/8" Male	22	1/2"	G	0.06
42020804	G 1/2" Male	27	1/4"	G	0.08
42020805	G 1/2" Male	27	5/16"	G	0.08
42020806	G 1/2" Male	27	3/8"	G	0.08
42020808	G 1/2" Male	27	1/2"	G	0.09
42020810	G 1/2" Male	27	5/8"	G	0.1
42020812	G 1/2" Male	27	3/4"	G	0.12
42021008	G 5/8" Male	30	1/2"	G	0.16
42021010	G 5/8" Male	30	5/8"	G	0.12
42021208	G 3/4" Male	32	1/2"	G	0.14
42021210	G 3/4" Male	32	5/8"	G	0.14
42021212	G 3/4" Male	32	3/4"	G	0.16
42021216	G 3/4" Male	32	1"	G	0.21
42021612	G 1" Male	41	3/4"	G	0.25
42021616	G 1" Male	41	1"	G	0.29
42022016	G 1 1/4" Male	50	1"	G	0.42



Part no	Thread	Hex (mm)	Hose ID (inch)	Thread type	Weight (kg)
42022020	G 1 1/4" Male	50	1 1/4"	G	0.47
42022420	G 1 1/2" Male	55	1 1/4"	G	0.56
42022424	G 1 1/2" Male	55	1 1/2"	G	0.6
42023224	G 2" Male	70	1 1/2"	G	0.86
42023232	G 2" Male	70	2"	G	0.98
42024040	G 2 1/2" Male	-	2 1/2"	G	1.55
42024848	G 3" Male	-	3"	G	-

