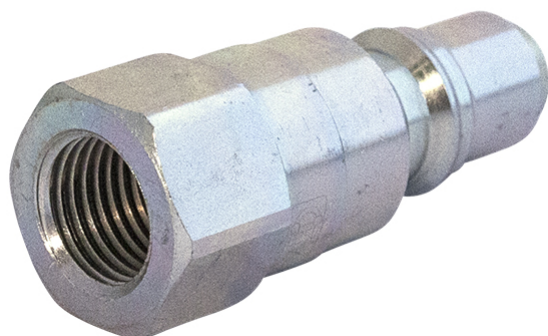


# HS SERIES T



<b>Product group</b>	530
<b>Connected length (mm)</b>	108
<b>Locking sleeve</b>	No
<b>Security lock</b>	No
<b>Bulkhead</b>	No
<b>Eliminator</b>	No
<b>Valve</b>	Yes
<b>Type (Male/Female)</b>	Male

Part no	Dimension (Inch)	Thread type	Working pressure (MPa)	Thread	Weight (kg)
55520204V	1/4"	-	45	G 1/4" Female	0.05
55520206V	3/8"	-	35	G 3/8" Female	0.06
55520208V	1/2"	G	30	G 1/2" Female	0.1
55520212V	3/4"	-	28	G 3/4" Female	0.19
55520216V	1"	-	25	G 1" Female	0.36

