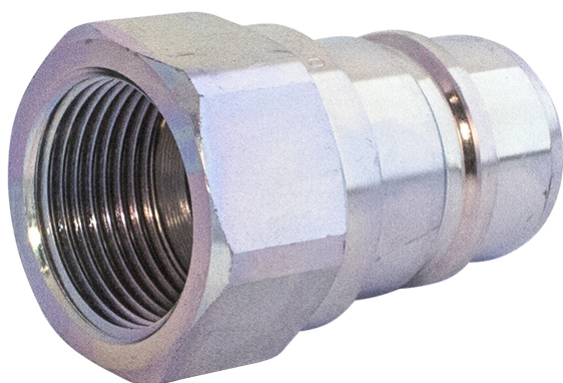


# FASTER NV



Product group	380
Connected length (mm)	166
Bulkhead	No
Locking sleeve	No
Security lock	No
Valve	Yes
Type (Male/Female)	Male
Eliminator	No

Part no	Thread type	Working pressure (MPa)	Thread	Dimension (Inch)	Weight (kg)
55580204	-	35	G 1/4" Female	1/4"	0.04
55580206	-	30	G 3/8" Female	3/8"	0.07
55580208	-	30	G 1/2" Female	1/2"	0.08
55580212	-	25	G 3/4" Female	3/4"	0.12
55580215	M	30	M 22x1.5 Female	1/2"	-
55580216	-	23	G 1" Female	1"	0.28
55580220	-	22	G 1 1/4" Female	1 1/4"	0.52
55580224	-	18	G 1 1/2" Female	1 1/2"	0.9
55580232	-	13	G 2" Female	2"	2.28