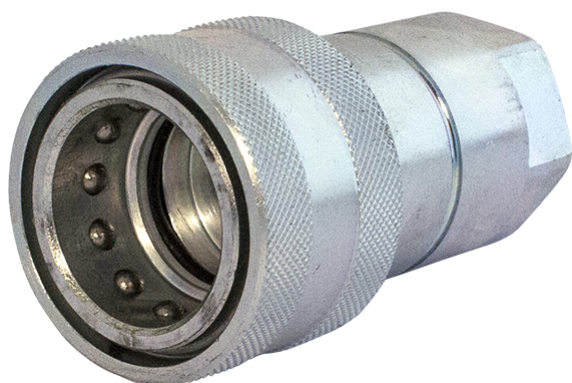


# FASTER NV



Product group	520
Valve	Yes
Type (Male/Female)	Female
Eliminator	No
Connected length (mm)	166
Locking sleeve	No
Security lock	No
Bulkhead	No

Part no	Thread type	Working pressure (MPa)	Thread	Dimension (Inch)	Weight (kg)
55580304	-	35	G 1/4" Female	1/4"	0.1
55580306	-	30	G 3/8" Female	3/8"	0.19
55580308	-	30	G 1/2" Female	1/2"	0.25
55580312	-	25	G 3/4" Female	3/4"	0.5
55580315	M	30	M 22x1.5 Female	1/2"	-
55580316	-	23	G 1" Female	1"	0.82
55580320	-	22	G 1 1/4" Female	1 1/4"	1.45
55580324	-	18	G 1 1/2" Female	1 1/2"	2.38
55580332	-	13	G 2" Female	2"	4.78

