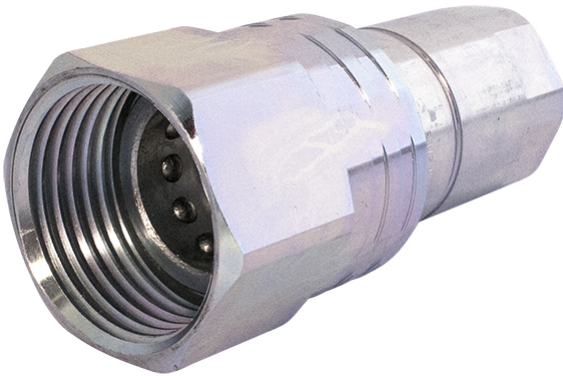


Faster series VV



Product group	520
Connected length (mm)	132
Bulkhead	No
Locking sleeve	No
Security lock	No
Type (Male/Female)	Female
Eliminator	No
Valve	Yes

Part no	Dimension (Inch)	Working pressure (MPa)	Thread	Weight (kg)
55582304	1/4"	35	G 1/4" Female	0.12
55582306	3/8"	30	G 3/8" Female	0.23
55582308	1/2"	30	G 1/2" Female	0.31
55582312	3/4"	25	G 3/4" Female	0.69
55582316	1"	23	G 1" Female	0.96