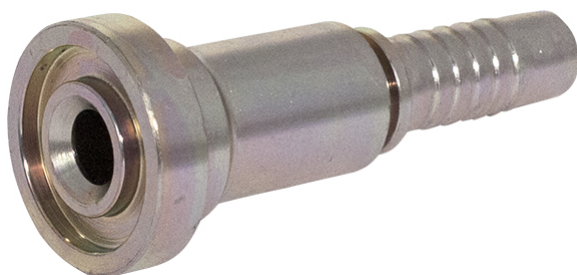


Straight SAE J518 flange



Product group	380
Material	Stainless steel
Series	42-series
Shape	Straight
Fitting type	Flange
Flange type	SAE Code 62 - 6000 psi

Part no	Flange size (inch)	Hose ID (inch)	Weight (kg)
42531616S	1"	1"	0.49
42532016S	1 1/4"	1"	-
42532020S	1 1/4"	1 1/4"	0.62

